

**sala4D**

Landscape architecture.  
Urban design.  
Public domain.

# BINALONG VILLAGE MASTERPLAN DESIGN REPORT

YASS VALLEY COUNCIL


# sala4D

Landscape architecture.  
Urban design.  
Public domain.

Level 1, 244-246 Summer Street.  
Orange. NSW. 2800

Directors.

 **Celia Baxter** AILA RLA  
E. [celia@sala4d.com](mailto:celia@sala4d.com)  
M. 0497 114 884

 **Shahreen Alford** AILA FRLA 1008  
E. [shah@sala4d.com](mailto:shah@sala4d.com)  
M. 0421 860 186

 [www.sala4D.com](http://www.sala4D.com)

...let's make the world a better place

Document issue:	Revision:	Date:	Review	Sign-off:
Draft Design Report	-	21-12-23	S	Alford
Draft Design Report for Public Exhibition	1	18-03-24	-	C Baxter

sala4D is an approved contractor of Local Government Procurement

Thank you to all the community members who generously gave their time to participate in the community consultation event in Binalong; we look forward to receiving ongoing input into the design process.

CONTENTS

- 1.0 Binalong Village Masterplan Purpose
  - 1.2 The Brief
- 2.0 Design Foundation
  - 2.1 Community Consultation Process
  - 2.2 Community Design Values
    - 2.2.1 Conceptual Values
    - 2.2.2 Image and Word Values
    - 2.2.3 Plan Analysis
- 3.0 Principles for Design
  - 3.1 Guiding Principles for Design
- 4.0 The Village Masterplan
- 5.0 Prioritised Schedule of Works
- 6.0 Cost Plan

## 1.0 Binalong Village Masterplan Purpose

Yass Valley Council has recognised the importance of strategic planning for all its villages; and the importance of quality consultation with the community in developing that planning.

This masterplan is the result of an engagement session with community members, along with telephone conversations and emails to clarify items.

Feedback on the draft masterplan is an important part of the consultation process and comment is encouraged.

### 1.2 The Brief

Council's brief requested a masterplan for Binalong to enhance the village centre and the connection to Burley Griffin Way by recommending improvements to promote the unique history and heritage of the village taking account of the village character and existing niche artisan offerings. The plan makes recommendations for improvements to entry points, streetscape, recreation and open spaces areas, linkages to surrounding landscapes, accessibility, amenity and

wayfinding.

The brief identified a quadrilateral project focus area which extended along Richmond Street, between Queen and Wellington Street, extending to the north east to include the Village Childcare and Pre-School. However, during the community workshop there was conversation about village enhancement and actions items important to the community that extended beyond the project focus area. As a result the masterplan included these items with a community understanding that from Council's implementation perspective, action items within the project focus area (as per the original brief) would be of the highest priority.

## 2.0 Design Foundation

### 2.1 Community Consultation Process

Community consultation is the first step in the design process and is used to elicit the preferences of the community; these values described by the community become the guiding principles for the design.

The sala4D team conducted a community consultation workshop with the community on Saturday the 24th of November, 2023.

The information gathered through this process is critical in the development of the Village Masterplan, as it gives the design team a sound background of community preferences, ideals and values for their village.

## 2.2 Community Design Values

### 2.2.1 Conceptual Values

To start the workshops, sala4D uses a warm-up exercise that helps participants understand the value of planning for the whole community and how most people have very similar desires.

The three questions were:

- Write down a fond memory of where you grew up?
- When do you feel part of your community?
- If you could do one thing for your community what would it be?

Responses about childhood memories were very much about being in the outdoors with friends and family; about feeling part of the community was about volunteering, or helping others - these are great responses to see given the development of the masterplan.

The question about what they would do for the community gets more specific and helps inform the masterplan. Here we heard about traffic, facility needs, such as sporting amenity and school buildings, and about more businesses in the village.

## 2.2.2 Image and Word Values

sala4D then moved to a word and image page exercise designed to uncover subconscious preferences. The results of these exercises are shown on the next few pages and reveal the following ideals from participants:

- Design and Aesthetic (what the Village should look like):
  - Wayfinding signage
  - Acknowledgement of cultural heritage



Community consultation workshop.

- Practical furniture
- Flowering plants
- Amenity (what the Village should provide):
  - Signage (wayfinding and interpretation)
  - Outdoor exercise equipment
  - Street furniture
- Activity (what you should be able to do in the Village):
  - Meet up with people
  - Keep the community connected (through information)
  - Stay cool (in shady places)\
- Future Character Vision (word choice):
  - Welcoming
  - Artsy
  - Farmer-friendly
  - Pedestrian-friendly

The following pages show all the consultation image pages and word page used in the workshop.

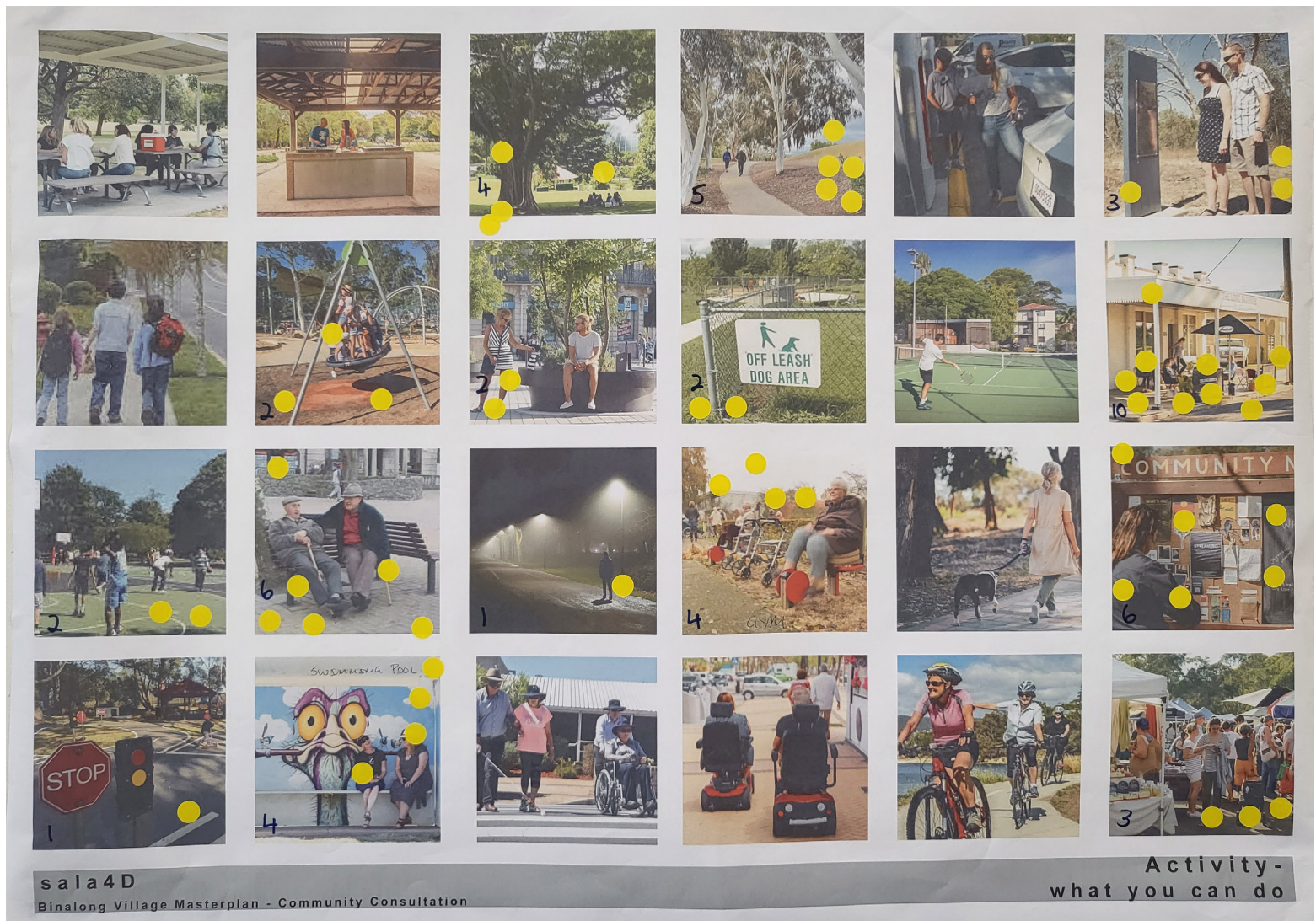


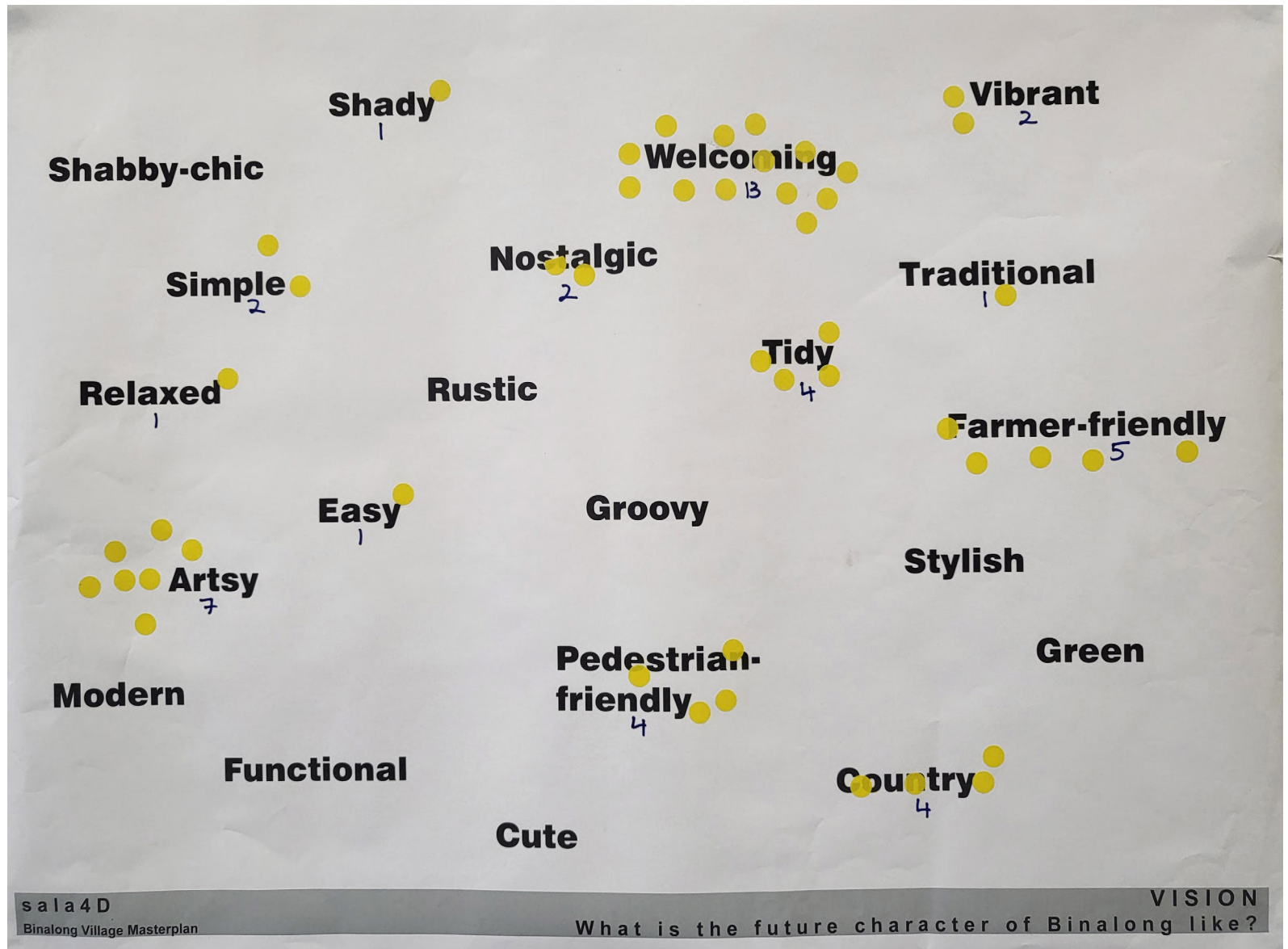
sala4D  
Binalong Village Masterplan - Community Consultation

Design and Aesthetic - what it looks like









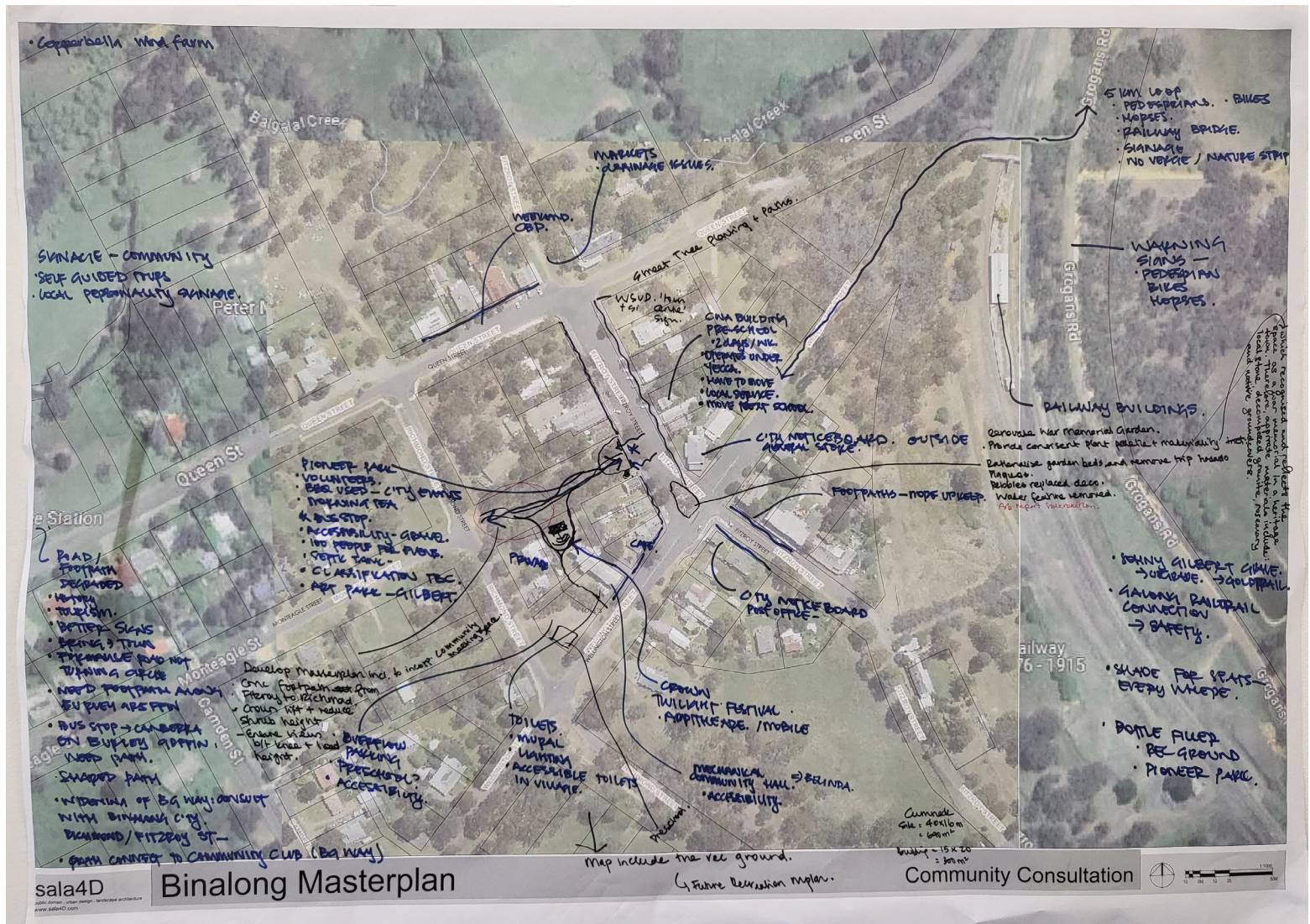
### 2.2.3 Plan Analysis

The final exercise in the workshop was an analysis exercise using a plan of the village, with the workshop participants, to identify locations, specific items, issues, opportunities etc.

The marked up plan is shown on the following page.

The main results from the consultation analysis, are:

- Renovate the War Memorial Garden;
- Upgrade Pioneer Park to be more inviting to visitors and to cater to community needs;
- There is a need to find a new location for a pre-school/ childcare facility;
- Provide better footpath connections throughout the village;
- Signage is needed to help potential visitors find the village businesses,
- There is a need for street furniture including seats, bins and a water bottle filler; and,
- More tree planting will encourage more use of the streets.



## 3.0 Principles for Design

### 3.1 Guiding Principles for Design

The following diagram is a summary of the consultation results, showing how the values translate to guiding principles of design and then how those flow into priority projects for the masterplan.

## Consultation Workshop Values

### Design and Aesthetic



- Signage to help wayfinding
- Acknowledgement of cultural heritage
- Practical furniture
- Flowering plants

### Amenity



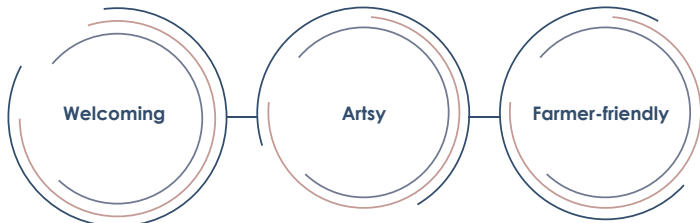
- Signage (wayfinding and interpretive)
- Outdoor exercise equipment
- Street furniture

### Activity



- Meeting up with people
- Keeping the community connected
- Staying cool (in shade)

### Future Character Vision



## Guiding Principles

## Priority Projects in Schedule



## 4.0 The Village Masterplan

The Village Masterplan is designed to be a working, motivational document that can be used by the Council, the Community or even individual groups to plan works and to seek funding from other sources.

An indicative plant and material palette is included, and is representative of the stylistic preferences the Community expressed in the consultation session.

The Masterplan should be kept alive through regular reviews and updates, at least every five and ten years.

The Masterplan and Plant and Materials Palettes are included in the following pages.

## 5.0 Prioritised Schedule of Works

A prioritised schedule of works has been developed as part of the Binalong Village Masterplan. These are included in the finalised Masterplan and schedules. Individual projects for the masterplan have been prioritised using a scoring tool that ranks each project against a range of criteria. This method maintains transparency between Council, stakeholders and the community.

The criteria used to score projects includes the Guiding Principles for Design and best practice urban design guidelines including the “Planning Institute of Australia, Creating Places for People, an Urban Design Protocol for Australian Cities”, 2011.



Projects located within the 'Project Focus Area' will be given priority with funds directed towards the most effective solutions.

Progress against the schedule of works should be reviewed every 5 years, to re-assess priorities and evaluate use, and to ensure the community's needs are being met.

The rationale for the Binalong quick win projects is:

1. Any projects ranking 1 to 3. These projects are:
  - Commission detail design for the War Memorial Garden and all the associated projects (2.08-2.16)
  - Pioneer Park and all the associated projects (2.17-2.28)
2. 1.12 as it's an easy project to install, but is high profile and something that was raised in the consultation workshop

## 6.0 Cost Estimates

Cost estimates are for guidance only, with figures current in 2023.



Ref 0.23 Seek funding to regenerate Bungal Creek through riparian planting and terrestrial tree planting and remove weeds, rubbish/ debris

Ref 0.19 Review Council's LEP settlement strategy with particular regard to ensuring there is sufficient residential land available for purchase

Ref 0.04 Protect significant trees & remnant vegetation under the LEP Biodiversity provisions for significant vegetation

Ref 1.12 Install warning signs around the Grogans Road loop to alert drivers to look out for horses, bicycles and pedestrians

Ref 1.07 Provide footpath along Wellington Street to join Grogans Road loop

Ref 1.16 Plant water sensitive urban design grasses at the corner of Fitzroy and Queen Street, including small tree planting, to address drainage issues and improve town presentation (construction budget)

Ref 1.09 Provide footpath along Queen Street which connects with Wellington Street, through the road easement (construction budget)

Ref 1.15 Plant water sensitive urban design grasses at the corner of Richmond and Queen Street to minimise mowing in culvert (construction budget)

Ref 1.14 Plant small flowering trees to verge to minimise mowing areas and improve amenity (construction budget)

Ref 0.02 Develop a Council policy for commercial use of public open space to support the delivery of events and flexible spaces in consultation with land managers

Ref 0.24 Develop a maintenance agreement between Council and Binalong Progress Association which addresses insurances, risk management and WHS requirements

Ref 0.21 Encourage projects which improve the environmental sustainability of the village

Ref 1.13 Widen the street outside Police Station and Church with two-part seal to accommodate vehicle movements and pull-over area

Ref 0.13 Rationalise and remove redundant signage throughout the village, especially at town entrances

Ref 1.01 Install new village entry signage and directional signage for the Village centre (includes removing existing signage)

Ref 1.02a Commission Planting Plans along Burley Griffin Way, to signal drivers to reduce speeds and village surrounds to improve village presentation, with appropriate species selected under power-lines (design work by consultants)

Ref 1.02b Plant street trees along Burley Griffin Way (with ongoing watering and maintenance) in accordance with Planting Plans (construction budget)

Ref 1.05 Provide footpath connection along Monteaale Street from Richmond Street to bus stop on Burley Griffin Way (construction budget)

Ref 1.06 Provide footpath connection along Burley Griffin Way from Monteaale to Wellington Street (construction budget)

Refer 1.04a Commission detail design of proposed footpaths throughout Binalong, including cycling/ pedestrian nodes (design work by consultants)

Ref 1.04b Provide footpath connection along Wellington Street from Richmond Street to the bus stop on Burley Griffin Way (construction budget)

Ref 1.03 Install bus shelters on Burley Griffin Way, either side of the street, at Wellington Street, or other agreed location

Ref 1.08 Provide footpath along Wellington Street beyond Burley Griffin Way, to create a circuit loop which connects to Dickinson Street (construction budget)

Ref 0.05 Develop a Council policy which minimises mowing in parks and open green space to reduce maintenance & maximise habitat, for example, mulching around groups of trees, rather than mowing between

Ref 0.17 Install fire retardant and drought tolerant street trees (including ongoing watering and maintenance), per the Binalong Village Masterplan

Ref 0.18 Install seats every 200m along shared footpaths to improve accessibility options for the aged & others

Ref 1.10 Provide footpath along Richmond Street to provide a continuous connection to the recreation ground (construction budget)

Ref 1.11 Provide cycling/ pedestrian node (concrete pad with seat) to footpaths (construction budget)

Ref 0.20 Ensure the Masterplan for the Recreation Ground addresses concerns and required improvements for the playground, connectivity to the village, infrastructure and amenity improvements and provision of shade

Ref 0.25 Install new village name entry signage at each of the village approaches, including removal of signage, landscaping and weed removal. (Signage design finalised separately.)

Ref 0.22 Council to investigate with TfNSW speed calming measures, signage, tree planting and speed enforcement along Burley Griffin Way/ Stephen Street to improve safety and village amenity



Ref 2.026 Commission a town-wide Public Art and Mural Plan to optimise active travel and tourism opportunities

Ref 2.07a - Pioneer Park - Commission a plan for the upgrade of park to improve visitor amenity, connectivity and spaces for the community to meet. The plan should include the land to the rear of the Mechanical Institute and connectivity to the toilets on Wellington Street. Path connections should be incorporated between Richmond Street and Fitzroy Street. (Design work by consultants.)

Ref 2.07e - Install decomposed granite to mural to allow story to be read and artwork appreciation to Pioneer Park per the plan (construction budget)

Ref 2.07f - Install brick edging to garden beds to minimise maintenance to Pioneer Park per the plan (construction budget)

Ref 2.07i- Install a water bottle filler (including connection) at Pioneer Park per the plan (construction budget)

Ref 2.07d- Install park amenity including picnic shelters, accessible picnic tables and BBQ to Pioneer Park per the plan (construction budget)

Ref 2.07c- Install concrete paths to Pioneer Park per the plan (construction budget)

Ref 2.07g- Commission local Aboriginal art for installation in Pioneer Park per the plan (construction budget)

Ref 2.07h- Install outdoor exercise equipment along paths to Pioneer Park per the plan (construction budget)

Ref 2.07i- Install interpretive signage, including the old farm machinery, to Pioneer Park per the plan (construction budget)

Ref 2.07k- Install motion sensor bollard lighting to Pioneer Park per the plan (construction budget)

Ref 2.07b- Crown lift existing trees and reduce shrub height in Pioneer Park to ensure views between knee and head height (construction budget)

Ref 2.07j- Install seats along paths to Pioneer Park per the plan (construction budget)

Ref 2.08a- Rear of the Mechanical Institute - Commission detail design for the amphitheatre/ flexible performance space to provide spaces for the community to meet. The plan should consider connectivity to the toilets on Wellington Street and Pioneer Park (design work by consultants)

Ref 2.08b- Install amphitheatre/ flexible performance space (including earthworks, electrical supply etc) to rear of the Mechanical Institute per the plan (construction budget)

Ref 2.08c- Install trees to rear of the Mechanical Institute per the plan (construction budget)

Ref 2.09 Install seats and garbage bins in appropriate locations around the Village, ensuring seats are located where shade is available (construction budget)

Ref 2.10 Install pedestrian street lighting along Fitzroy Street to improve safety (design & construction budget)

Ref 2.11a - Fitzroy Street Planting Plans - Commission plans, using the Stockholm planting method within the road pavement, and through the village centre to improve presentation, with appropriate species selected under power-lines (design work by consultants)

Ref 2.11b - Plant trees along Fitzroy Street using the Stockholm planting method within the road pavement, per the plans (construction budget)

Ref 2.11c - Plant trees throughout the Village centre per the masterplan to provide shade, per the plans (construction budget)

Ref 2.05a- Commission the design of an interpretive signage suite for the Village and promote a self-guided walking tour using the signs (design work by consultants)

Ref 2.05b- Install an interpretive signage suite for the Village and promote a self-guided walking tour using the signs (construction budget)

Ref 2.06a- War Memorial Garden - Commission detail design for the renovation of the garden, including plant selection and material palette (design work by consultants)

Ref 2.06b- Seek Council assistance in the installation of the War Memorial Garden as a community project, involving volunteers if desired

Ref 2.06c- Crown lift existing trees and reduce shrub height in War Memorial Garden to ensure views between knee and head height (construction budget)

Ref 2.07d- Commission arboricultural assessment of the health and vitality of Eucalyptus sideroxylon in War Memorial Garden per the plan

Ref 2.07e- Install plants, sympathetic to a war memorial in a heritage town, in War Memorial Garden per the plan (construction budget)

Ref 2.06f- Install paths to War Memorial Garden to rationalise garden beds, remove pebbles and remove trip hazards per the plan (construction budget)

Ref 2.06g- Remove redundant water feature in War Memorial Garden per the plan (construction budget)

Ref 2.06h- Install plaques (existing and new) in War Memorial Garden per the plan (construction budget)

Ref 2.06i- Install soldier silhouettes (existing and new) in War Memorial Garden per the plan (construction budget)

Ref 2.04 Provide upgraded community noticeboards at the Post Office and at the entrance to Pioneer Park

Ref 2.03 Seek grant funding in co-operation with the Mechanical Institute to complete improvements to the Community Hall, addressing items such as: electrical safety upgrade, improved accessibility options, new paint etc.

Ref 2.02d- Replace toilets on Wellington Street to include accessible and ambulant options (construction budget)

Ref 2.02c- Commission the painting of a mural to the toilets on Wellington Street, once toilets are replaced (construction budget)

Ref 2.02b- Create a terraced garden between the Mechanical Institute and open space to reduce mowing and improve village presentation (construction budget)

Ref 2.02a- Mechanics Institute Hall - Commission detail design of terraced garden between the Mechanical Institute and open space (to reduce mowing and improve village presentation), upgraded toilets and mural to toilets (design work by consultants)

Ref 2.01 Seek funding assistance to develop a Village Childcare and Pre-School. Seek co-operation from the Mechanical Institute to locate the centre on the Stan Galloway Memorial Carpark (design & construction budget)

PARK AMENITY



Powdercoated metal structure picnic shelter (image from Landmark)



Powdercoated metal lockers (image from Landmark)



Interpretive imagery on lockers (image from Landmark)



Outdoor exercise equipment (image from Loppse!)

PATHS, FURNITURE AND SIGNAGE



Decomposed granite path



Concrete path



Seats with backs and arms (image from Integrated Recycling)



Garbage bin (image from Furphy)



Interpretive and wayfinding signage



Double, wheelchair accessible BBQ (image from Town and Park)

MAIN STREET TREES



*Fraxinus pennsylvanica* 'Cinnamon'  
Cinnamon Ash  
13m H x 8m W



*Acer x freemanii* 'Autumn Blaze'  
Canadian Maple  
13m H x 10m W



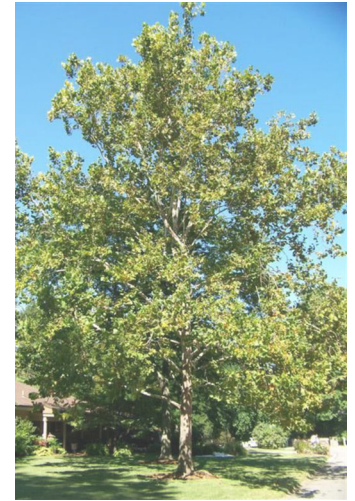
*Eucalyptus albens*  
White Box  
15m H x 10m W



*Eucalyptus viminalis*  
Ribbon Gum  
20m H x 15m W



*Quercus coccinea*  
Scarlet Oak  
12m H x 8m W



*Platanus x acerifolia*  
London Plane Tree  
14m H x 10m W

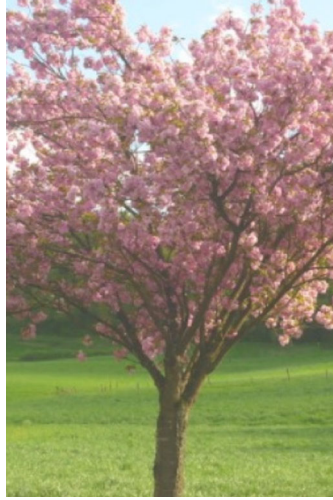
SIDE STREET TREES (UNDER POWERLINES)



*Pistacia chinensis*  
Chinese Pistachio  
8m H x 6m W



*Prunus cerasifera* 'Nigra'  
Black Cherry Plum  
5m H x 4m W



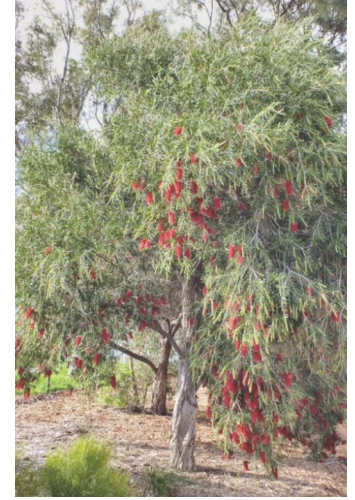
*Prunus serrulata* 'Kanzan'  
Flowering Pink Cherry  
5m H x 4m W



*Fraxinus excelsior* 'Aurea'  
Golden Ash  
7m H x 7m W



*Melaleuca linariifolia* 'Snow in Summer'  
Snow in Summer Melaleuca  
8m H x 6m W



*Callistemon viminalis*  
Weeping Bottle Brush  
5m H x 4m W

NOTE:  
Indicative species only. Exact planting selections to be confirmed separately.

# BINALONG VILLAGE MASTERPLAN

## PRIORITISED SCHEDULE OF WORKS

REF.	ACTION	SCORING CRITERIA																SCORE	RANK	QUICK WIN PROJECTS
		PRINCIPLES OF DESIGN										OTHER								
		Signage to help wayfinding & interpretation	Acknowledgement of cultural heritage	Practical furniture	Flowering plants	Outdoor exercise equipment	Street furniture	Meeting up with people	Keeping the community connected	Staying cool (in shade)	Tourism	Health	CPTED	Multi-Use	Operational Benefit	Environmental Gain				
<b>0.00</b>	<b>POLICY AND COUNCIL WIDE PROJECTS</b>																			
0.01	Update Yass Valley Council's Management Plans and strategic policy to include outcomes from Binalong masterplan	X	X	X	X	X	X	X	X	X	X	X	X	X	X	X	15	1	<input checked="" type="checkbox"/>	
0.02	Develop a Council policy for commercial use of public open space to support the delivery of events and flexible spaces in consultation with land managers							X	X		X			X	X		5	11	<input type="checkbox"/>	
0.03	Ensure proposals protect the cultural landscape and heritage values of the Aboriginal and non-Aboriginal community		X								X				X	X	4	12	<input type="checkbox"/>	
0.04	Protect significant trees & remnant vegetation under the LEP Biodiversity provisions for significant vegetation		X							X	X					X	4	12	<input type="checkbox"/>	
0.05	Develop a Council policy which minimises mowing in parks and open green space to reduce maintenance & maximise habitat, for example, mulching around groups of trees, rather than mowing between														X	X	2	14	<input type="checkbox"/>	
0.06	Remove debris/ rubbish throughout public open space										X				X	X	3	13	<input type="checkbox"/>	
0.07	Remove weeds throughout the public open space with an ongoing eradication plan										X				X	X	3	13	<input type="checkbox"/>	
0.08	Remove dead & under performing trees, per the masterplan										X				X	X	3	13	<input type="checkbox"/>	
0.09	Provide accessible paths at compliant grades							X	X		X	X		X	X		6	10	<input type="checkbox"/>	
0.10	Update Pedestrian Access and Mobility Plan (PAMP) or develop an Active Travel Plan to include masterplan proposals and promote active travel								X		X	X			X		4	12	<input type="checkbox"/>	
0.11	Commission a village-wide Wayfinding and Interpretive Signage Plan to optimise active travel, tourism and trail opportunities	X						X			X				X		4	12	<input type="checkbox"/>	
0.12	Register Aboriginal cultural heritage on relevant government data bases i.e. AHIMS		X								X				X	X	4	12	<input type="checkbox"/>	
0.13	Rationalise and remove redundant signage throughout the village, especially at town entrances										X				X		2	14	<input type="checkbox"/>	
0.14	Continue to support community group initiatives and events which support the village, community and tourism opportunities							X	X		X				X		4	12	<input type="checkbox"/>	
0.15	Continue to liaise with energy providers to reduce poor tree pruning works and improve streetscape outcomes									X					X	X	3	13	<input type="checkbox"/>	

# BINALONG VILLAGE MASTERPLAN

## PRIORITISED SCHEDULE OF WORKS

REF.	ACTION	SCORING CRITERIA														SCORE	RANK	QUICK WIN PROJECTS							
		PRINCIPLES OF DESIGN										OTHER													
		Signage to help wayfinding & interpretation	Acknowledgement of cultural heritage	Practical furniture	Flowering plants	Outdoor exercise equipment	Street furniture	Meeting up with people	Keeping the community connected	Staying cool (in shade)	Tourism	Health	CPTED	Multi-Use	Operational Benefit				Environmental Gain						
0.16	Review Council's tree planting methods to ensure optimal growing environment																		X	X	3	13			
0.17	Install fire retardant and drought tolerant street trees (including ongoing watering and maintenance), per the Binalong Village Masterplan				X														X	X	4	12			
0.18	Install seats every 200m along shared footpaths to improve accessibility options for the aged & others							X	X	X		X	X									5	11		
0.19	Review Council's LEP settlement strategy with particular regard to ensuring there is sufficient residential land available for purchase																				X		1	15	
0.20	Ensure the Masterplan for the Recreation Ground addresses concerns and required improvements for the playground, connectivity to the village, infrastructure and amenity improvements and provision of shade	X		X	X	X	X	X	X	X	X	X	X	X	X	X	X	X	X	X	X	14	2	✓	
0.21	Encourage projects which improve the environmental sustainability of the village																			X	X	2	14		
0.22	Council to investigate with TfNSW speed calming measures, signage, tree planting and speed enforcement along Burley Griffin Way/ Stephen Street to improve safety and village amenity	X										X	X	X					X	X	6	10			
0.23	Seek funding to regenerate Balgalal Creek through riparian planting and terrestrial tree planting and remove weeds, rubbish/ debris												X						X	X	3	13			
0.24	Develop a maintenance agreement between Council and Binalong Progress Association which addresses insurances, risk management and WHS requirements																			X		1	15		
0.25	Install new village name entry signage at each of the village approaches, including removal of signage, landscaping and weed removal. (Signage design finalised separately.)	X										X							X		3	13			
0.26	Commission a town-wide Public Art and Mural Plan to optimise active travel and tourism opportunities		X							X		X									3	13			

# BINALONG VILLAGE MASTERPLAN

## PRIORITISED SCHEDULE OF WORKS

REF.	ACTION	SCORING CRITERIA														SCORE	RANK	QUICK WIN PROJECTS	INSIDE PROJECT FOCUS AREA	
		PRINCIPLES OF DESIGN										OTHER								
		Signage to help wayfinding & interpretation	Acknowledgement of cultural heritage	Practical furniture	Flowering plants	Outdoor exercise equipment	Street furniture	Meeting up with people	Keeping the community connected	Staying cool (in shade)	Tourism	Health	CPTED	Multi-Use	Operational Benefit					Environmental Gain
<b>1.00</b>	<b>VILLAGE ENTRANCES AND SURROUNDS</b>																			
1.01	Install new village entry signage and directional signage for the Village centre (includes removing existing signage)	X									X			X			3	13		
1.02a	Commission Planting Plans along Burley Griffin Way, to signal drivers to reduce speeds and village surrounds to improve village presentation, with appropriate species selected under power-lines (design work by consultants)				X						X	X				X	4	12		
1.02b	Plant street trees along Burley Griffin Way (with ongoing watering and maintenance) in accordance with Planting Plans (construction budget)				X						X	X			X	4	12			
1.03	Install bus shelters on Burley Griffin Way, either side of the street, at Wellington Street, or other agreed location			X			X			X				X		4	12			
1.04a	Commission detail design of proposed footpaths throughout Binalong, including cycling/ pedestrian nodes (design work by consultants)								X	X	X	X		X		5	11			
1.04b	Provide footpath connection along Wellington Street from Richmond Street to the bus stop on Burley Griffin Way (construction budget)								X	X	X	X		X		5	11			
1.05	Provide footpath connection along Monteagle Street from Richmond Street to bus stop on Burley Griffin Way (construction budget)								X	X	X	X		X		5	11			
1.06	Provide footpath connection along Burley Griffin Way from Monteagle to Wellington Street (construction budget)								X	X	X	X		X		5	11			
1.07	Provide footpath along Wellington Street to join Grogans Road loop								X	X	X	X		X		5	11			
1.08	Provide footpath along Wellington Street beyond Burley Griffin Way, to create a circuit loop which connects to Dickinson Street (construction budget)								X	X	X	X		X		5	11			
1.09	Provide footpath along Queen Street which connects with Wellington Street, through the road easement (construction budget)								X	X	X	X		X		5	11			
1.10	Provide footpath along Richmond Street to provide a continuous connection to the recreation ground (construction budget)								X	X	X	X		X		5	11			
1.11	Provide cycling/ pedestrian node (concrete pad with seat) to footpaths (construction budget)			X			X	X	X		X	X				6	10			
1.12	Install warning signs around the Grogans Road loop to alert drivers to look out for horses, bicycles and pedestrians													X		1	15	✓		
1.13	Widen the street outside Police Station and Church with two-part seal to accommodate vehicle movements and pull-over area													X		1	15			



# BINALONG VILLAGE MASTERPLAN

## PRIORITISED SCHEDULE OF WORKS

REF.	ACTION	SCORING CRITERIA													SCORE	RANK	QUICK WIN PROJECTS	INSIDE PROJECT FOCUS AREA		
		PRINCIPLES OF DESIGN										OTHER								
		Signage to help wayfinding & interpretation	Acknowledgement of cultural heritage	Practical furniture	Flowering plants	Outdoor exercise equipment	Street furniture	Meeting up with people	Keeping the community connected	Staying cool (in shade)	Tourism	Health	CPTED	Multi-Use					Operational Benefit	Environmental Gain
1.14	Plant small flowering trees to verge to minimise mowing areas and improve amenity (construction budget)				X						X					X	3	13		✓
1.15	Plant water sensitive urban design grasses at the corner of Richmond and Queen Street to minimise mowing in culvert (construction budget)															X	2	14		✓
1.16	Plant water sensitive urban design grasses at the corner of Fitzroy and Queen Street, including small tree planting, to address drainage issues and improve town presentation (construction budget)														X	X	2	14		✓
<b>2.00</b>	<b>VILLAGE</b>																			
2.01	Seek funding assistance to develop a Village Childcare and Pre-School. Seek co-operation from the Mechanical Institute to locate the centre on the Stan Galloway Memorial Carpark (design & construction budget)										X			X	X		3	13		✓
2.02a	Mechanics Institute Hall - Commission detail design of terraced garden between the Mechanical Institute and open space (to reduce mowing and improve village presentation), upgraded toilets and mural to toilets (design work by consultants)		X		X						X		X	X	X	X	7	9		✓
2.02b	Create a terraced garden between the Mechanical Institute and open space to reduce mowing and improve village presentation (construction budget)				X									X	X		3	13		✓
2.02c	Commission the painting of a mural to the toilets on Wellington Street, once toilets are replaced (construction budget)		X											X			2	14		✓
2.02d	Replace toilets on Wellington Street to include accessible and ambulant options (construction budget)										X		X	X	X		4	12		✓
2.03	Seek grant funding in co-operation with the Mechanical Institute to complete improvements to the Community Hall, addressing items such as: electrical safety upgrade, improved accessibility options, new paint etc.								X	X	X		X	X			5	11		✓
2.04	Provide upgraded community noticeboards at the Post Office and at the entrance to Pioneer Park										X		X	X	X		4	12		✓
2.05a	Commission the design of an interpretive signage suite for the Village and promote a self-guided walking tour using the signs (design work by consultants)	X	X								X		X				4	12		✓
2.05b	Install an interpretive signage suite for the Village and promote a self-guided walking tour using the signs (construction budget)	X	X								X		X				4	12		✓
2.06a	War Memorial Garden - Commission detail design for the renovation of the garden, including plant selection and material palette (design work by consultants)	X	X	X	X		X	X	X	X	X		X	X	X	X	13	3	✓	✓
2.06b	Seek Council assistance in the installation of the War Memorial Garden as a community project, involving volunteers if desired							X	X					X			3	13	✓	✓
2.06c	Crown lift existing trees and reduce shrub height in War Memorial Garden to ensure views between knee and head height (construction budget)												X	X			2	14	✓	✓

# BINALONG VILLAGE MASTERPLAN

## PRIORITISED SCHEDULE OF WORKS

REF.	ACTION	SCORING CRITERIA														SCORE	RANK	QUICK WIN PROJECTS	INSIDE PROJECT FOCUS AREA
		PRINCIPLES OF DESIGN										OTHER							
		Signage to help wayfinding & interpretation	Acknowledgement of cultural heritage	Practical furniture	Flowering plants	Outdoor exercise equipment	Street furniture	Meeting up with people	Keeping the community connected	Staying cool (in shade)	Tourism	Health	CPTED	Multi-Use	Operational Benefit				
2.06d	Install paths to War Memorial Garden to rationalise garden beds, remove pebbles and remove trip hazards per the plan (construction budget)													X		1	15	✓	✓
2.06e	Install plants, sympathetic to a war memorial in a heritage town, in War Memorial Garden per the plan (construction budget)				X										X	2	14	✓	✓
2.06f	Remove redundant water feature in War Memorial Garden per the plan (construction budget)													X		1	15	✓	✓
2.06g	Commission arboricultural assessment of the health and vitality of Eucalyptus sideroxylon in War Memorial Garden and carry out works													X	X	2	14	✓	✓
2.06h	Install plaques (existing and new) in War Memorial Garden per the plan (construction budget)	X	X								X					3	13	✓	✓
2.06i	Install soldier silhouettes (existing and new) in War Memorial Garden per the plan (construction budget)		X								X					2	14	✓	✓
2.07a	Pioneer Park - Commission a plan for the upgrade of park to improve visitor amenity, connectivity and spaces for the community to meet. The plan should include the land to the rear of the Mechanical Institute and connectivity to the toilets on Wellington Street. Path connections should be incorporated between Richmond Street and Fitzroy Street. (Design work by consultants.)	X	X	X	X	X	X	X	X	X	X	X	X	X	X	15	1	✓	✓
2.07b	Crown lift existing trees and reduce shrub height in Pioneer Park to ensure views between knee and head height (construction budget)												X	X		2	14	✓	✓
2.07c	Install concrete paths to Pioneer Park per the plan (construction budget)							X	X		X	X		X		6	10	✓	✓
2.07d	Install park amenity including picnic shelters, accessible picnic tables and BBQ to Pioneer Park per the plan (construction budget)			X			X	X	X	X		X	X	X		9	7	✓	✓
2.07e	Install decomposed granite to mural to allow story to be read and artwork appreciation to Pioneer Park per the plan (construction budget)		X											X		2	14	✓	✓
2.07f	Install brick edging to garden beds to minimise maintenance to Pioneer Park per the plan (construction budget)													X		1	15	✓	✓
2.07g	Commission local Aboriginal art for installation in Pioneer Park per the plan (construction budget)		X								X					2	14	✓	✓
2.07h	Install outdoor exercise equipment along paths to Pioneer Park per the plan (construction budget)					X		X	X			X				4	12	✓	✓
2.07i	Install interpretive signage, including the old farm machinery, to Pioneer Park per the plan (construction budget)	X												X		2	14	✓	✓

# BINALONG VILLAGE MASTERPLAN

## PRIORITISED SCHEDULE OF WORKS

REF.	ACTION	SCORING CRITERIA													SCORE	RANK	QUICK WIN PROJECTS	INSIDE PROJECT FOCUS AREA	
		PRINCIPLES OF DESIGN										OTHER							
		Signage to help wayfinding & interpretation	Acknowledgement of cultural heritage	Practical furniture	Flowering plants	Outdoor exercise equipment	Street furniture	Meeting up with people	Keeping the community connected	Staying cool (in shade)	Tourism	Health	CPTED	Multi-Use					Operational Benefit
2.07j	Install seats along paths to Pioneer Park per the plan (construction budget)			X	X					X	X					4	12	✓	✓
2.07k	Install motion sensor bollard lighting to Pioneer Park per the plan (construction budget)						X	X	X	X		X	X	X		7	9	✓	✓
2.07l	Install a water bottle filler (including connection) at Pioneer Park per the plan (construction budget)			X		X				X						3	13	✓	✓
2.08a	Rear of the Mechanical Institute - Commission detail design for the amphitheatre/ flexible performance space to provide spaces for the community to meet. The plan should consider connectivity to the toilets on Wellington Street and Pioneer Park (design work by consultants)			X			X	X			X		X			5	12		✓
2.08b	Install amphitheatre/ flexible performance space (including earthworks, electrical supply etc) to rear of the Mechanical Institute per the plan (construction budget)			X			X	X			X		X			5	12		✓
2.08c	Install trees to rear of the Mechanical Institute per the plan (construction budget)				X				X					X		3	13		✓
2.09	Install seats and garbage bins in appropriate locations around the Village, ensuring seats are located where shade is available (construction budget)			X			X	X	X	X	X					7	9		✓
2.10	Install pedestrian street lighting along Fitzroy Street to improve safety (design & construction budget)						X	X	X		X		X	X		7	9		✓
2.11a	Fitzroy Street Planting Plans - Commission plans, using the Stockholm planting method within the road pavement, and through the village centre to improve presentation, with appropriate species selected under power-lines (design work by consultants)																		✓
2.11b	Plant trees along Fitzroy Street using the Stockholm planting method within the road pavement, per the plans (construction budget)				X				X	X				X		4	12		✓
2.11c	Plant trees throughout the Village centre per the masterplan to provide shade, per the plans (construction budget)				X				X	X				X		4	12		✓

# BINALONG VILLAGE MASTERPLAN

## SCHEDULE OF WORKS COST PLAN

REF.	ACTION	COSTING			
<b>1.00</b>	<b>VILLAGE ENTRANCES AND SURROUNDS</b>				
1.01	Install new village entry signage and directional signage for the Village centre (includes removing existing signage)	ea	4	\$5,000	\$20,000
1.02a	Commission Planting Plans along Burley Griffin Way, to signal drivers to reduce speeds and village surrounds to improve village presentation, with appropriate species selected under power-lines (design work by consultants)	PC	1	\$10,000	\$10,000
1.02b	Plant street trees along Burley Griffin Way (with ongoing watering and maintenance) in accordance with Planting Plans (construction budget)	ea	67	\$1,200	\$80,400
1.03	Install bus shelters on Burley Griffin Way, either side of the street, at Wellington Street, or other agreed location	ea	2	\$20,000	\$40,000
1.04a	Commission detail design of proposed footpaths throughout Binalong, including cycling/ pedestrian nodes (design work by consultants)	PC	1	\$15,000	\$15,000
1.04b	Provide footpath connection along Wellington Street from Richmond Street to the bus stop on Burley Griffin Way (construction budget)	m2	451	\$200	\$90,200
1.05	Provide footpath connection along Monteagle Street from Richmond Street to bus stop on Burley Griffin Way (construction budget)	m2	454	\$200	\$90,800
1.06	Provide footpath connection along Burley Griffin Way from Monteagle to Wellington Street (construction budget)	m2	348	\$200	\$69,600
1.07	Provide footpath along Wellington Street to join Grogans Road loop	m2	745	\$200	\$149,000
1.08	Provide footpath along Wellington Street beyond Burley Griffin Way, to create a circuit loop which connects to Dickinson Street (construction budget)	m2	482	\$200	\$96,400
1.09	Provide footpath along Queen Street which connects with Wellington Street, through the road easement (construction budget)	m2	272	\$200	\$54,400
1.10	Provide footpath along Richmond Street to provide a continuous connection to the recreation ground (construction budget)	m2	807	\$200	\$161,400
1.11	Provide cycling/ pedestrian node (concrete pad with seat) to footpaths (construction budget)	ea	10	\$5,000	\$50,000
1.12	Install warning signs around the Grogans Road loop to alert drivers to look out for horses, bicycles and pedestrians	ea	2	\$2,000	\$4,000
1.13	Widen the street outside Police Station and Church with two-part seal to accommodate vehicle movements and pull-over area	m2	95	\$80	\$7,600
1.14	Plant small flowering trees to verge to minimise mowing areas and improve amenity (construction budget)	ea	13	\$500	\$6,500
1.15	Plant water sensitive urban design grasses at the corner of Richmond and Queen Street to minimise mowing in culvert (construction budget)	Item	1	\$3,000	\$3,000
1.16	Plant water sensitive urban design grasses at the corner of Fitzroy and Queen Street, including small tree planting, to address drainage issues and improve town presentation (construction budget)	Item	2	\$5,000	\$10,000
			Subtotal		\$958,300
			Contingency	30%	\$287,490

# BINALONG VILLAGE MASTERPLAN

## SCHEDULE OF WORKS COST PLAN

REF.	ACTION	COSTING		
		Estimate		\$1,245,790
<b>2.00</b>	<b>VILLAGE</b>			
	Seek funding assistance to develop a Village Childcare and Pre-School. Seek co-operation from the Mechanical Institute to locate the centre on the Stan Galloway Memorial Carpark (design & construction budget)	Item	1	\$2,000,000 \$2,000,000
2.01				
2.02a	Mechanics Institute Hall - Commission detail design of terraced garden between the Mechanical Institute and open space (to reduce mowing and improve village presentation), upgraded toilets and mural to toilets (design work by consultants)	PC	1	\$7,000 \$7,000
2.02b	Create a terraced garden between the Mechanical Institute and open space to reduce mowing and improve village presentation (construction budget)	Item	1	\$10,000 \$10,000
2.02c	Commission the painting of a mural to the toilets on Wellington Street, once toilets are replaced (construction budget)	ea	1	\$5,000 \$5,000
2.02d	Replace toilets on Wellington Street to include accessible and ambulant options (construction budget)	PC	1	\$300,000 \$300,000
2.03	Seek grant funding in co-operation with the Mechanical Institute to complete improvements to the Community Hall, addressing items such as: electrical safety upgrade, improved accessibility options, new paint etc.	PC	1	\$500,000 \$500,000
2.04	Provide upgraded community noticeboards at the Post Office and at the entrance to Pioneer Park	ea	2	\$2,000 \$4,000
2.05a	Commission the design of an interpretive signage suite for the Village and promote a self-guided walking tour using the signs (design work by consultants)	PC	1	\$10,000 \$10,000
2.05b	Install an interpretive signage suite for the Village and promote a self-guided walking tour using the signs (construction budget)	ea	10	\$5,000 \$50,000
2.06a	War Memorial Garden - Commission detail design for the renovation of the garden, including plant selection and material palette (design work by consultants)	PC	1	\$7,000 \$7,000
2.06b	Seek Council assistance in the installation of the War Memorial Garden as a community project, involving volunteers if desired	PC	1	\$40,000 \$40,000
2.06c	Crown lift existing trees and reduce shrub height in War Memorial Garden to ensure views between knee and head height (construction budget)	PC	1	\$5,000 \$5,000
2.06d	Install paths to War Memorial Garden to rationalise garden beds, remove pebbles and remove trip hazards per the plan (construction budget)	PC	1	\$10,000 \$10,000
2.06e	Install plants, sympathetic to a war memorial in a heritage town, in War Memorial Garden per the plan (construction budget)	PC	1	\$3,000 \$3,000
2.06f	Remove redundant water feature in War Memorial Garden per the plan (construction budget)	PC	1	\$3,000 \$3,000
2.06g	Commission arboricultural assessment of the health and vitality of Eucalyptus sideroxyton in War Memorial Garden and carry out works	PC	1	\$5,000 \$5,000
2.06h	Install plaques (existing and new) in War Memorial Garden per the plan (construction budget)	PC	1	\$7,000 \$7,000
2.06i	Install soldier silhouettes (existing and new) in War Memorial Garden per the plan (construction budget)	PC	1	\$5,000 \$5,000

# BINALONG VILLAGE MASTERPLAN

## SCHEDULE OF WORKS COST PLAN

REF.	ACTION	COSTING			
	Pioneer Park - Commission a plan for the upgrade of park to improve visitor amenity, connectivity and spaces for the community to meet. The plan should include the land to the rear of the Mechanical Institute and connectivity to the toilets on Wellington Street. Path connections should be incorporated between Richmond Street and Fitzroy Street. (Design work by consultants.)				
2.07a		PC	1	\$15,000	\$15,000
2.07b	Crown lift existing trees and reduce shrub height in Pioneer Park to ensure views between knee and head height (construction budget)	PC	1	\$10,000	\$10,000
2.07c	Install concrete paths to Pioneer Park per the plan (construction budget)	m2	775	\$200	\$155,000
2.07d	Install park amenity including picnic shelters, accessible picnic tables and BBQ to Pioneer Park per the plan (construction budget)	PC	1	\$220,000	\$220,000
2.07e	Install decomposed granite to mural to allow story to be read and artwork appreciation to Pioneer Park per the plan (construction budget)	m2	100	\$40	\$4,000
2.07f	Install brick edging to garden beds to minimise maintenance to Pioneer Park per the plan (construction budget)	lm	100	\$40	\$4,000
2.07g	Commission local Aboriginal art for installation in Pioneer Park per the plan (construction budget)	Item	1	\$10,000	\$10,000
2.07h	Install outdoor exercise equipment along paths to Pioneer Park per the plan (construction budget)	Item	4	\$10,000	\$40,000
2.07i	Install interpretive signage, including the old farm machinery, to Pioneer Park per the plan (construction budget)	Item	1	\$5,000	\$5,000
2.07j	Install seats along paths to Pioneer Park per the plan (construction budget)	Item	3	\$2,500	\$7,500
2.07k	Install motion sensor bollard lighting to Pioneer Park per the plan (construction budget)	PC	1	\$40,000	\$40,000
2.07l	Install a water bottle filler (including connection) at Pioneer Park per the plan (construction budget)	ea	1	\$5,000	\$5,000
	Rear of the Mechanical Institute - Commission detail design for the amphitheatre/ flexible performance space to provide spaces for the community to meet. The plan should consider connectivity to the toilets on Wellington Street and Pioneer Park (design work by consultants)				
2.08a		PC	1	\$15,000	\$15,000
2.08b	Install amphitheatre/ flexible performance space (including earthworks, electrical supply etc) to rear of the Mechanical Institute per the plan (construction budget)	Item	1	\$100,000	\$100,000
2.08c	Install trees to rear of the Mechanical Institute per the plan (construction budget)	Item	9	\$500	\$4,500
2.09	Install seats and garbage bins in appropriate locations around the Village, ensuring seats are located where shade is available (construction budget)	ea	12	\$5,000	\$60,000
2.10	Install pedestrian street lighting along Fitzroy Street to improve safety (design & construction budget)	PC	1	\$100,000	\$100,000
	Fitzroy Street Planting Plans - Commission plans, using the Stockholm planting method within the road pavement, and through the village centre to improve presentation, with appropriate species selected under power-lines (design work by consultants)				
2.11a		PC	1	\$10,000	\$10,000
2.11b	Plant trees along Fitzroy Street using the Stockholm planting method within the road pavement, per the plans (construction budget)	ea	9	\$20,000	\$180,000

**BINALONG VILLAGE MASTERPLAN**  
**SCHEDULE OF WORKS COST PLAN**

REF.	ACTION	COSTING			
2.11c	Plant trees throughout the Village centre per the masterplan to provide shade, per the plans (construction budget)	ea	281	\$1,200	\$337,200
				Subtotal	\$4,293,200
				Contingency	30% \$1,287,960
				<b>Estimate</b>	<b>\$5,581,160</b>
				1.0 VILLAGE ENTRANCES AND SURROUNDS	\$1,245,790
				2.0 VILLAGE ENTRANCES AND SURROUNDS	\$5,581,160
				<b>MASTERPLAN TOTAL</b>	<b>\$6,826,950</b>